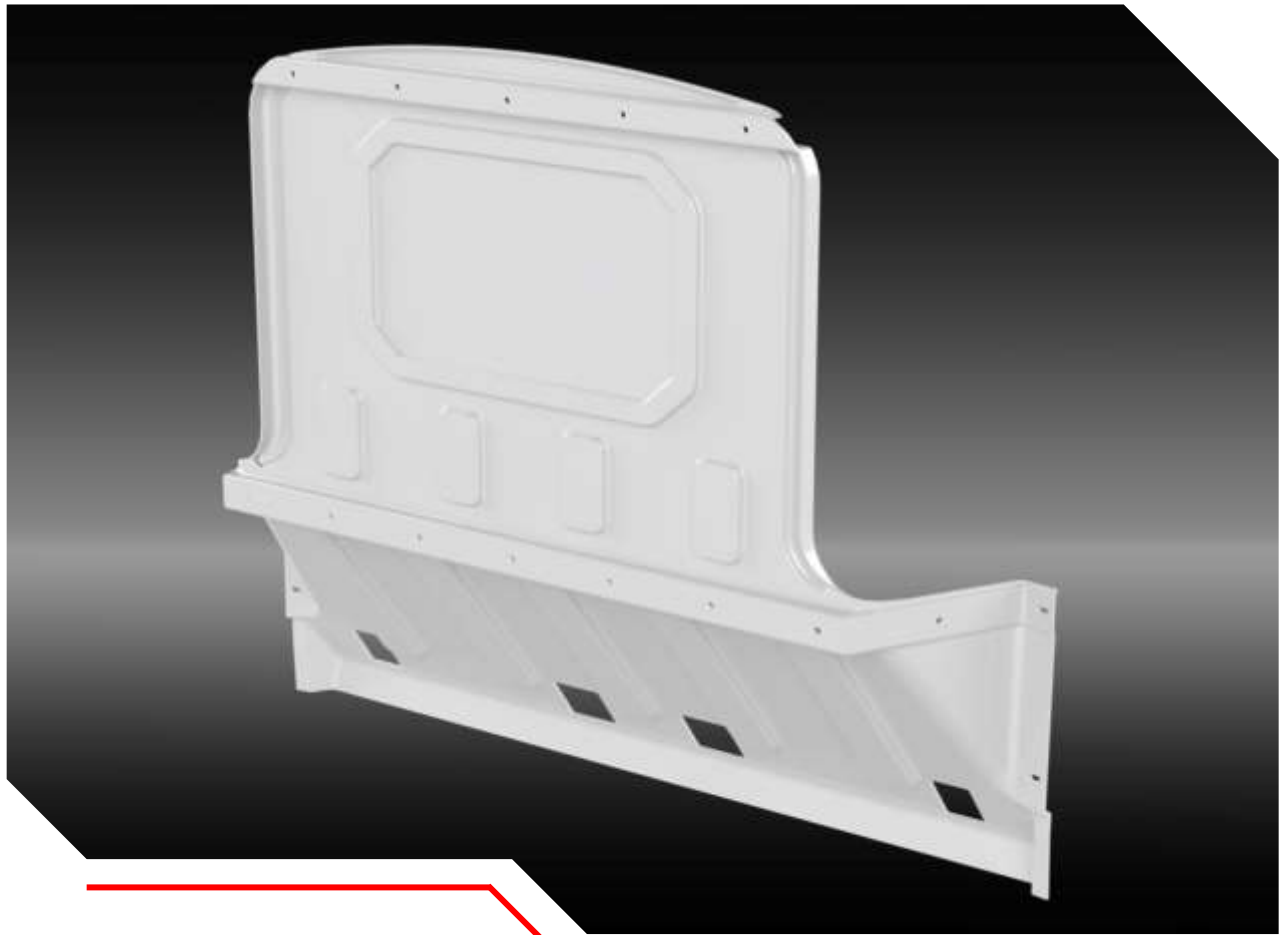


// K NAPHEIDE VAN EQUIPMENT

# ***MULLEN BULKHEAD INSTALLATION INSTRUCTIONS***



# **INTRODUCTION**

The following instructions detail the procedure for installing a Knapheide ABS Bulkhead in an Mullen Van.

## **TABLE OF CONTENTS**

HARDWARE.....3  
INSTALLATION INSTRUCTIONS.....4



The Knapheide Product Support Center  
1848 Westphalia Strasse | P.O. Box 7140 | Quincy, IL 62305

P: 217-592-5233 | [productsupport@knapheide.com](mailto:productsupport@knapheide.com)

Knapheide product warranty information can be found at

<https://www.knapheide.com/files/source/knapheide/Service/Knapheide-Warranty.pdf>

This document must not be copied or communicated to a third party without the expressed authorization of The Knapheide Manufacturing Company.

FOR REF ONLY

Printed copies are uncontrolled.

**// HARDWARE**



Carriage Bolt  
1/4" - 20 x .75"  
30900780



Flange Bolt  
M8 - 1.25" x 30mm  
33102160



Whiz Bolt  
.38" - 16 x 2"  
32487940



Whiz Lock Nut  
.25"  
12030144



Nylon Spacer  
.38"ID x .75"OD x .50"L  
33018330



Riv Nut Plus  
3/8"-16  
30440230

**CAUTION: Use of hardware other than provided, or alternative installation methods other than outlined herein, may void the product warranty. Fasteners should be tightened to called-out specifications or use the Fastenal website torque calculator for any hardware not called out. Use caution when using air or battery-operated tools.**

## // INSTALLATION INSTRUCTIONS



### **WARNING!**

*Before drilling into any part of a vehicle, check behind and underneath drilling and mounting locations for electrical wire, fuel lines, brake lines, and other critical vehicle components. Adjust the drilling location as required to avoid these components. Failure to do so can result in death or serious injury in addition to impairing critical vehicle functions.*

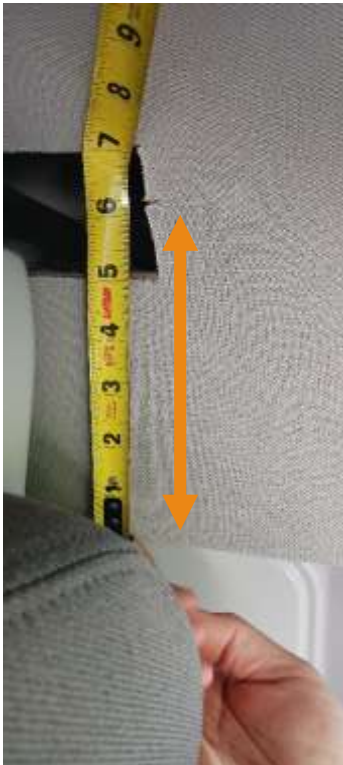
1. Remove pushpins holding the headliner to the roof bows and drop the headliner



2. Place 1 strip of Duct tape on each side of the roof bow to hold it to the roof when the bolts are removed in step 10.
3. Put the headliner back in place but do not reinstall pushpins



4. Locate center of holes, 2 3/8" aft inline of the roof bow push pins, 6" up from the lower headliner corner edges.



5. Trace a round or square 2 1/2" outline on each side of the headliner

6. Carefully drill or cut the headliner around the outline, taking care not to trim more than the headliner thickness as to not damage exterior sheet metal, wiring or side air bag modules.



10. Remove the roof bow attachment bolts.



11. Install the bracket (34903791) to the roof bow on the passenger side using (1) M8-1.25 x 30mm bolt (33102160). Install the bracket (34903700) to the roof bow on the driver side using (1) M8-1.25 x 30mm bolt (33102160).

12. Using the U-Channel as a guide, drill (7) 1/4" diameter holes in the bulkhead panel (do not drill in slot ends yet).



13. Install all (7) 1/4"-20 x .75" carriage bolts (30900780) with the head on the rear of the bulkhead using (7) 1/4"-20 whiz nuts (12030144).



14. Using the U-Channel (34903508) as a guide, drill all (9) 1/4" holes in the upper channel of the bulkhead panel.



15. Install all (9) 1/4"-20 x .75" carriage bolts (30900780) with the head on the rear of the bulkhead using (9) 1/4"-20 whiz nuts (12030144).

16. Drill 3/8" diameter holes in the 2 slot areas of the mid-bulkhead reinforcement ends.



17. Drill 2 additional 3/8" diameter holes in the below slot holes for additional lower b-pillar attachment.





18. Install the bulkhead and temporarily attach the top corner angle brackets to the roof bow attachments.

19. Use a marker to transfer 3/8" hole locations, 2 per side, onto the b-pillar trim panel surface.



20. Using the bulkhead 5/16" hole transfer marks, drill with a 1" holes saw in the plastic b-pillar trim panels, 2 per side..



21. Drill 9/16" diameter holes through the p-pillar sheet metal, 2 per side.

22. Install and compress (4) 3/8" riv-nut (50903910) into the 9/16" holes located in p-pillars sheet metal.



23. Loosely assemble (4) 3/8"-16 x 2 bolts (32487940) with nylon spacers (33018330) into the installed riv-nuts, 2 on both sides. Position the spacers to fit in the b-pillar trim clearance holes.



24. Tighten securely the LH and RH of the bulkhead with the installed 3/8"-16 x 2" bolts and spacers, 2 on both sides.

25. Place the bulkhead back into the vehicle aligning with top fasteners. At the headliner cutout areas, attach the bulkhead angle brackets to both roof bow attachment areas.



26. Tighten all nuts and bolts securely. Confirm all attachments are secure.



27. Re-install pushpins into the headliner taken out in step 1.





The Knapheide Product Support Center  
1848 Westphalia Strasse | P.O. Box 7140 | Quincy, IL 62305

**P: 217-592-5233 | [productsupport@knapheide.com](mailto:productsupport@knapheide.com)**