

// K NAPHEIDE VAN EQUIPMENT

# ***PARTITION INSTALLATION INSTRUCTIONS***

## **Partition on Ram Promaster Chassis**



**This document is derived from 35254568.**

This document must not be copied or communicated to a third party without the expressed authorization of The Knapheide Manufacturing Company.

FOR REF ONLY

Printed copies are uncontrolled.

// KNAPHEIDE VAN EQUIPMENT

## **INTRODUCTION** //

Knapheide takes pride in manufacturing the highest quality products available in the truck equipment industry. Proper operation and maintenance of Knapheide products will assure many years of service. Thoroughly read and understand all of the information provided in this manual/instruction and all other manuals for related OEM equipment and vehicle for this upfit. Follow all of the manufacturers' recommendations to ensure proper use of the equipment and qualify for product warranty support.

This manual/instruction and other information provided by The Knapheide Manufacturing Company, its subsidiaries, and authorized distributors, are designed to provide system and accessory operation and/or installation instruction for use by personnel with technical expertise of the product. Users should examine their system and determine the functionality of all included accessories with the help of this manual/instruction. This manual/instruction may not account for all options, equipment, and other added accessories which could impact the direction given. The user of this information is responsible for ensuring all performance and safety requirements of the application are met. If additional information or assistance is needed, please contact Knapheide.

**KNAPHEIDE**  
SINCE 1848

The Knapheide Product Support Center  
1848 Westphalia Strasse | P.O. Box 7140 | Quincy, IL 62305

P: 217-592-5233 |

[productsupport@knapheide.com](mailto:productsupport@knapheide.com)

Knapheide product warranty information

can be found at

<https://www.knapheide.com/files/source/knapheide/Service/Knapheide-Warranty.pdf>

## Table of Contents

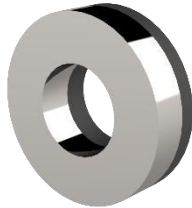
// HARDWARE.....	4
// PARTITION PREPARATION .....	6
// INSTALLATION INSTRUCTIONS.....	11

LATEST MAJOR REVISION			
Rev. #	Explanation of Revision	Page(s) Affected	Rev. Date
1	Initial Creation	All	11/14/24

// **HARDWARE**



Sealing Washer  
0.43" x 1.00"  
12051132 Qty. 6



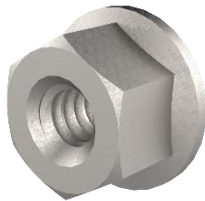
Sealing Washer  
0.27" x 0.562"  
12051207 Qty. 5



Whiz Bolt  
0.25" x 1.00"  
12065082 Qty. 9



Set Screw  
5/16"-18 x 2-1/2"  
30708230 Qty. 6



Flanged Locknut  
5/16"-18  
30708270 Qty. 6



Nylon Spacer  
1/2" L x 3/8" ID x 3/4" OD  
31836140 Qty. 6



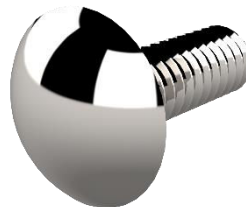
Plus Riv-Nut  
5/16"-18  
50903910 Qty. 6



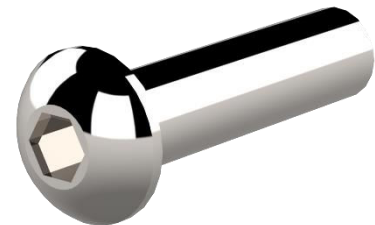
Ribbed Riv-Nut  
1/4"-20  
57904110 Qty. 9



Whiz Lock Nut  
0.25"  
12030144 Qty. 29

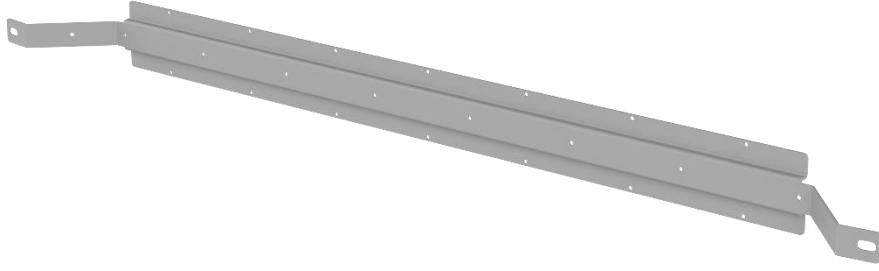


Carriage Bolt  
0.25" x 0.75"  
30900780 Qty. 27

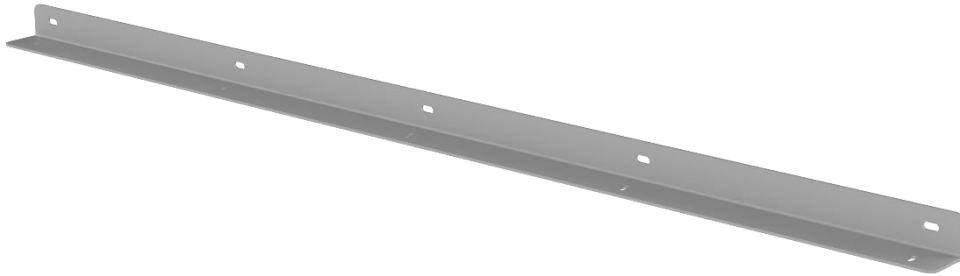


Button Head Screw  
1/4"-20 x 1"  
31451250 Qty. 2

**CAUTION:** Use of hardware other than provided, or alternative installation methods other than outlined herein, may void the product warranty. Fasteners should be tightened to called out specification or use Fastenal website torque calculator for any hardware not called out. Use caution when using air or battery operated tools.



B-Pillar Brace  
26256941 Qty. 1



L Bracket  
26256933 Qty. 1



Grab Handle Bracket  
26256958 Qty. 1



7" Grab Handle  
26268821 Qty. 1

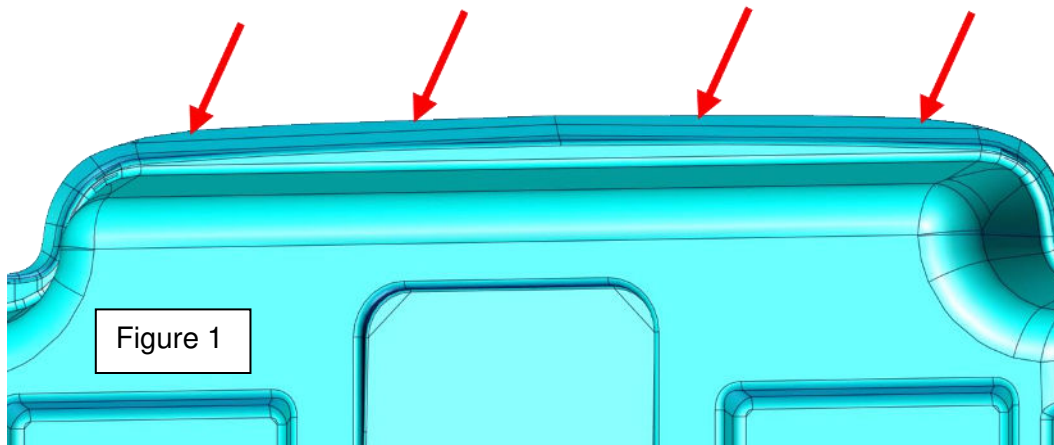
**CAUTION: Use of hardware other than provided, or alternative installation methods other than outlined herein, may void the product warranty. Fasteners should be tightened to called out specification or use Fastenal website torque calculator for any hardware not called out. Use caution when using air or battery operated tools.**

## // PARTITION PREPARATION



**WARNING!** Before drilling into any part of a vehicle, check behind and underneath drilling and mounting locations for electrical wire, fuel lines, brake lines, and other critical vehicle components. Adjust the drilling location as required to avoid these components. Failure to do so can result in death or serious injury in addition to impairing critical vehicle functions.

1. Use a 1/4" drill bit to drill through the four dimples at the top of the partition.



2. Drill 1/4" holes through the dimples on the left and right side partition flanges.

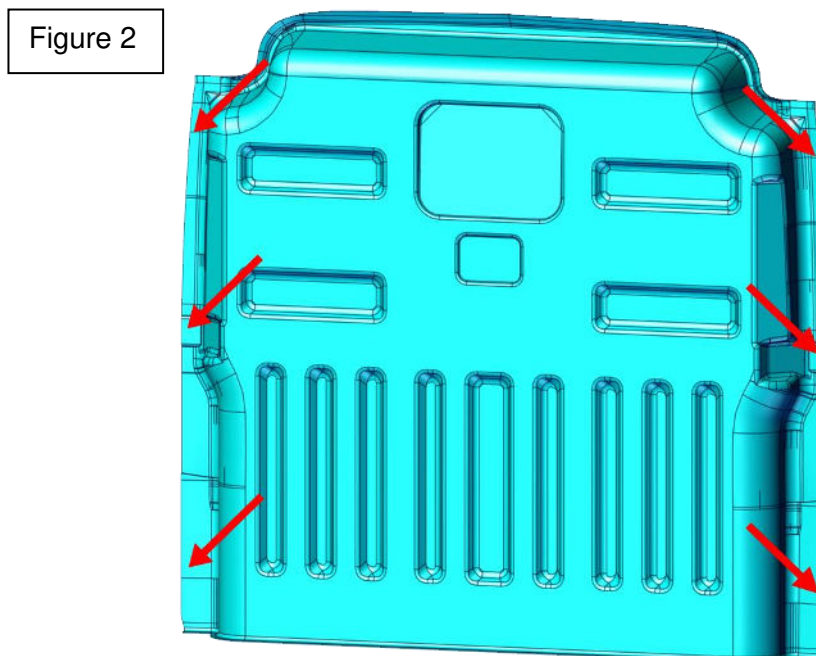
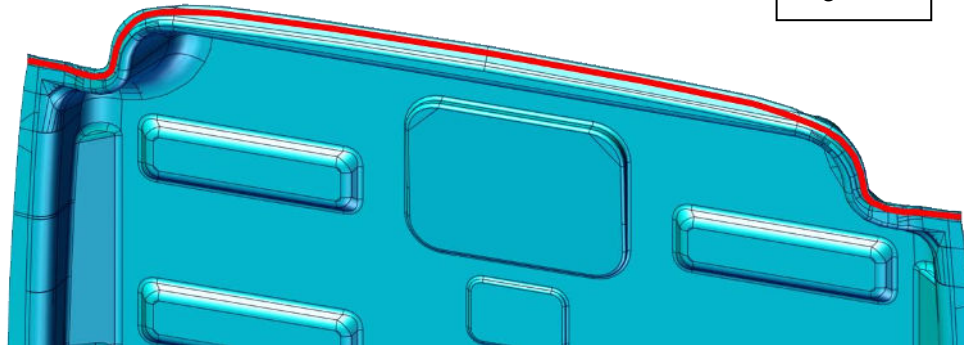


Figure 3



3. If a subfloor is installed in the van, the top of the partition must be trimmed to accommodate the floor thickness.
4. Stand the partition up and place the L-bracket against the cab side bottom of the partition. Center the L-bracket against the partition. Align the L-bracket with the dimples molded into the partition. Use the L-bracket as a template to drill 1/4" holes at each position.

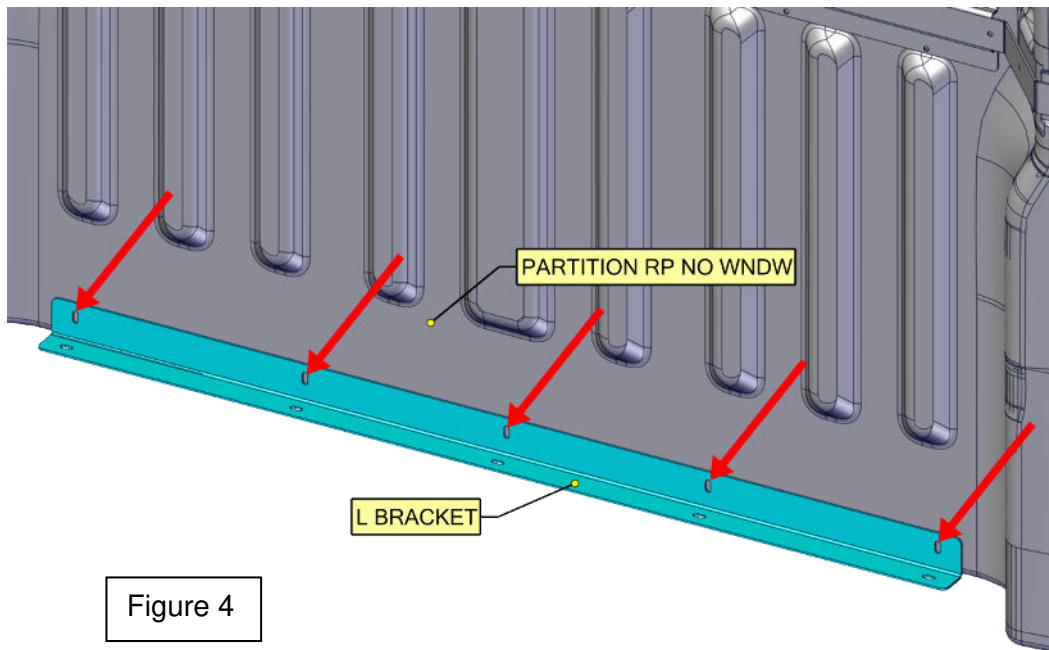
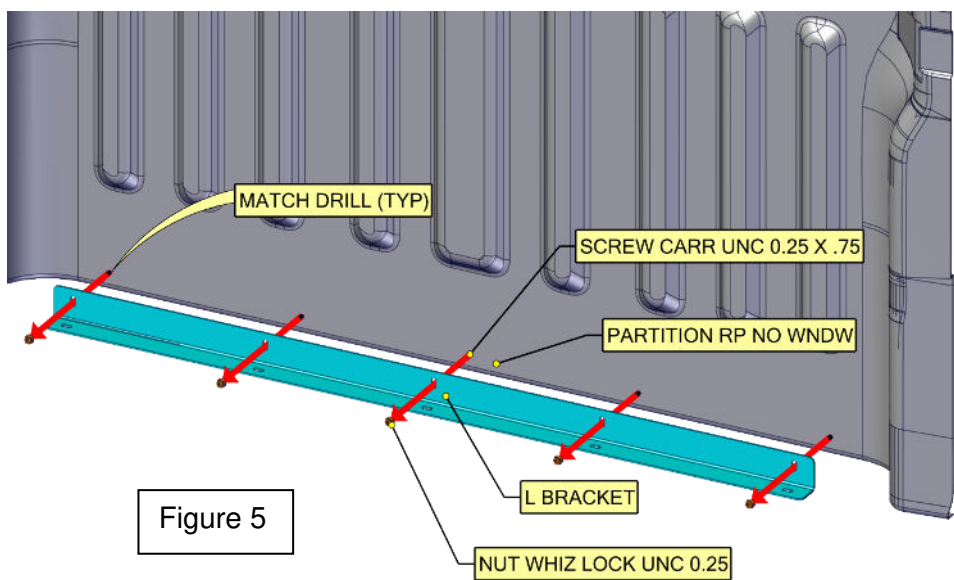
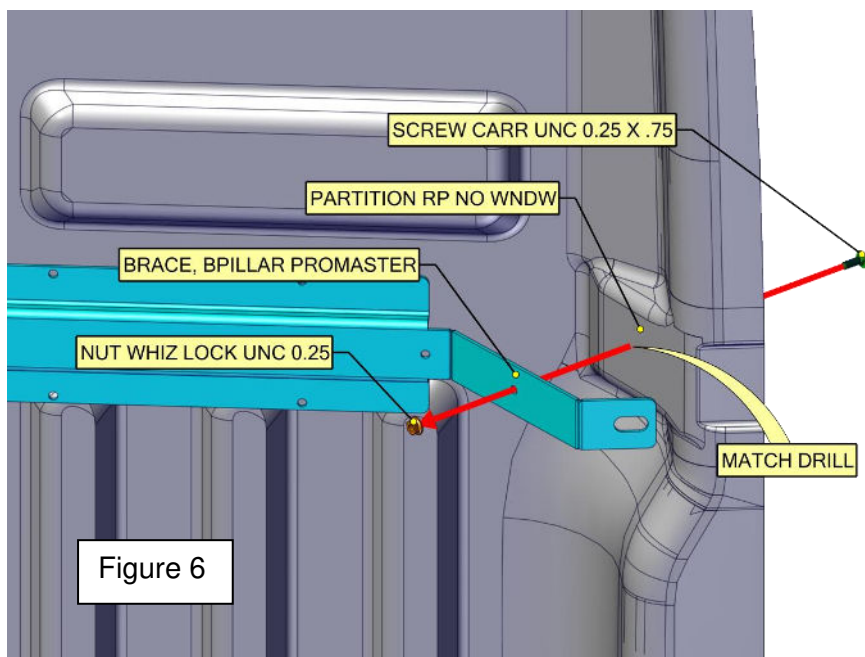


Figure 4

5. Attach the L-bracket to the partition by inserting 1/4"-20 x 3/4" carriage bolts from the cargo side and securing with 1/4"-20 nuts on the cab side.



6. Position the B-pillar brace to the partition as shown (both sides). Use the brace as a template to drill 1/4" holes through the partition at the location shown (right and left sides of partition).

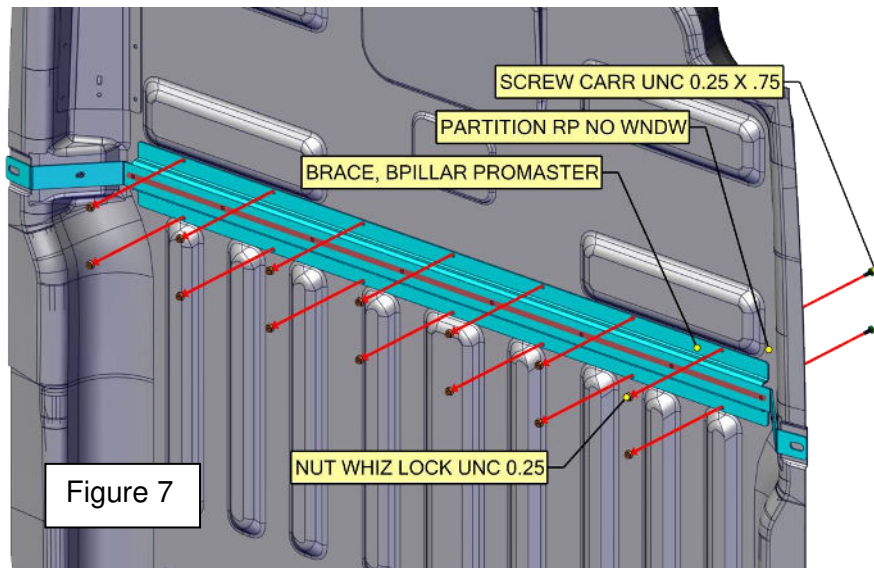


7. Attach the brace to the partition by installing 1/4"-20 carriage bolts from the cargo side and securing with 1/4" nuts on the cab side. Torque to 6 ft/lbs (±1 ft/lbs).

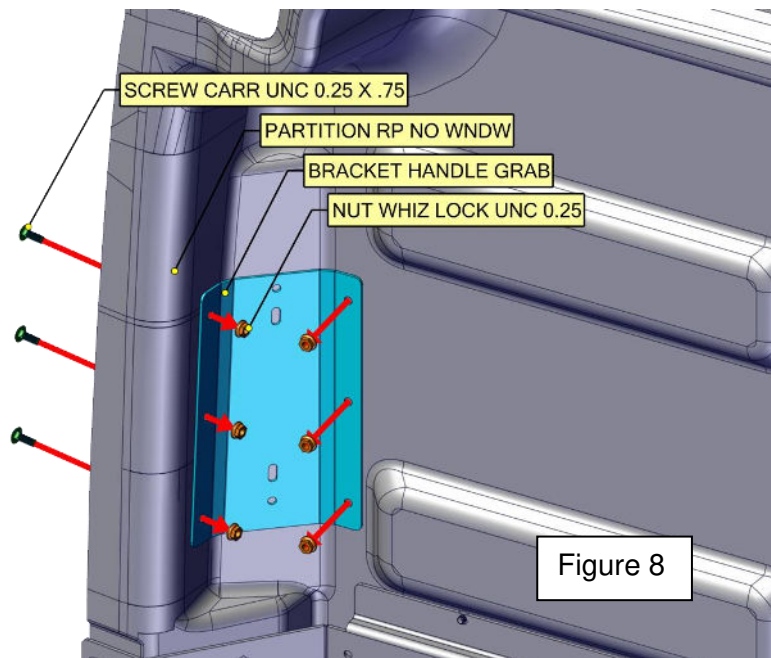


8. Drill 1/4" holes in the partition through the upper and lower holes of the B-pillar brace flanges.

**DO NOT** drill through the middle row of holes in the brace.

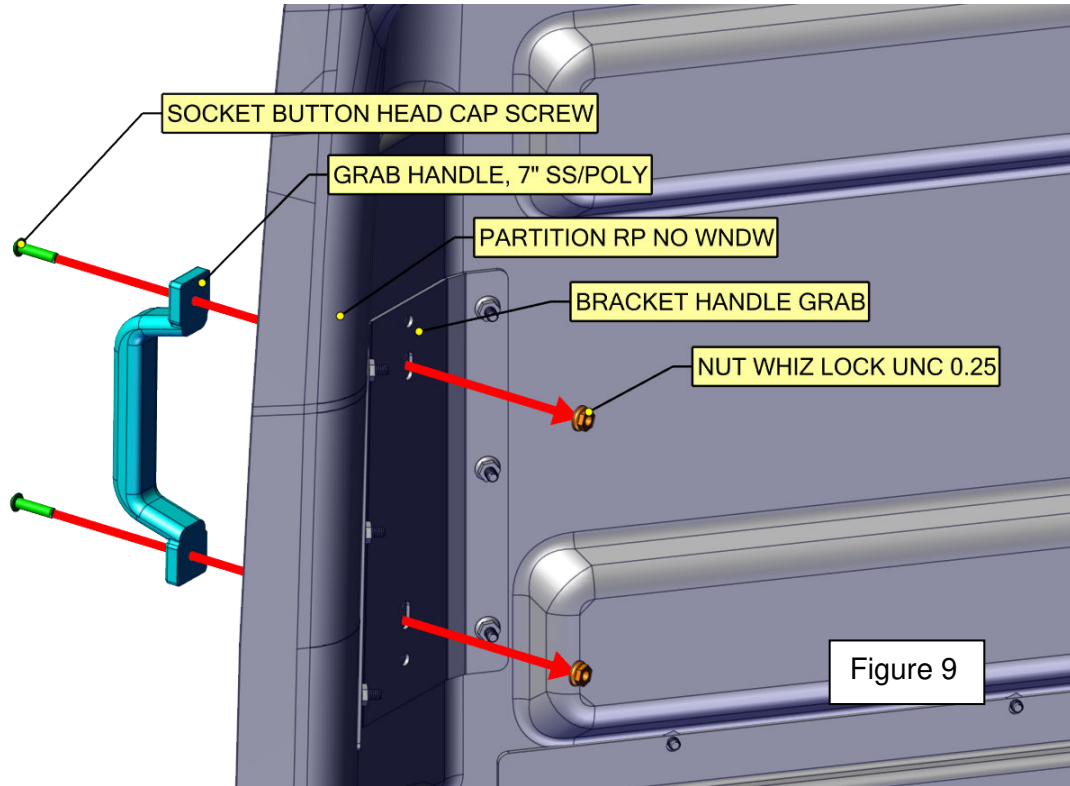


9. Install carriage bolts and nuts in the remaining holes and secure the brace to the partition as shown.
10. Self-locate the grab handle bracket on the passenger cab side of the partition (narrower end of the bracket to the top). Using the bracket as a template, drill six 1/4" holes through the partition.



11. Attach the bracket to the partition by installing carriage bolts from the cargo side and securing with nuts on the cab side.

12. Locate the two interior holes on the grab handle bracket and drill 1/4" holes.



13. Install the grab handle on the cargo side of the partition and secure it with 1/4" nuts on the cab side.
14. Install the caps over the grab handle mounting holes.

## // INSTALLATION INSTRUCTIONS



**WARNING!** Before drilling into any part of a vehicle, check behind and underneath drilling and mounting locations for electrical wire, fuel lines, brake lines, and other critical vehicle components. Adjust the drilling location as required to avoid these components. Failure to do so can result in death or serious injury in addition to impairing critical vehicle functions.

1. Remove the front half of the cargo door seal on the left and right cargo door openings.

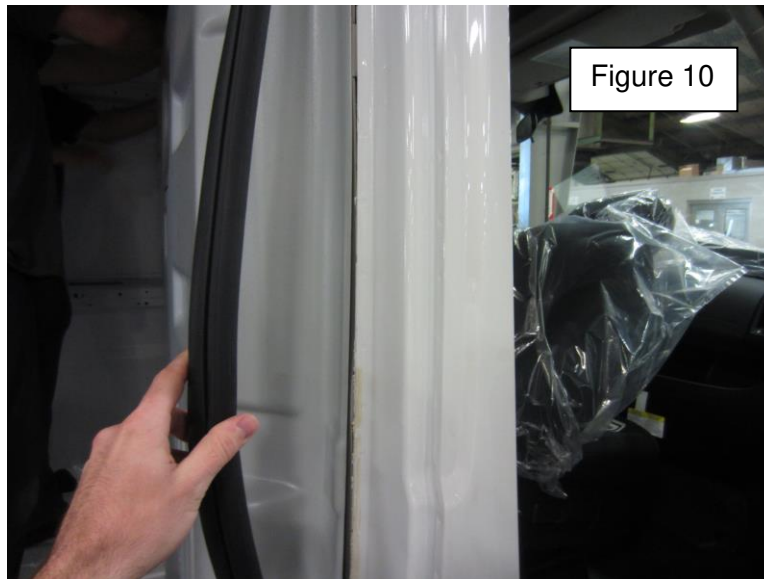


Figure 10

2. Lift the partition into the van. Slide the partition forward to the front of the cargo area just behind the cab seats. Tilt the top of the partition forward and push the bottom in place. Push both sides forward to fit snugly against the right and left B-pillars of the van.

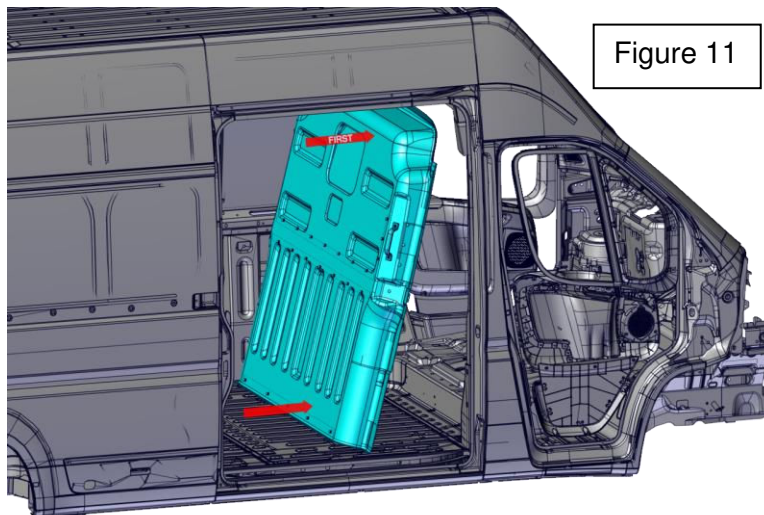
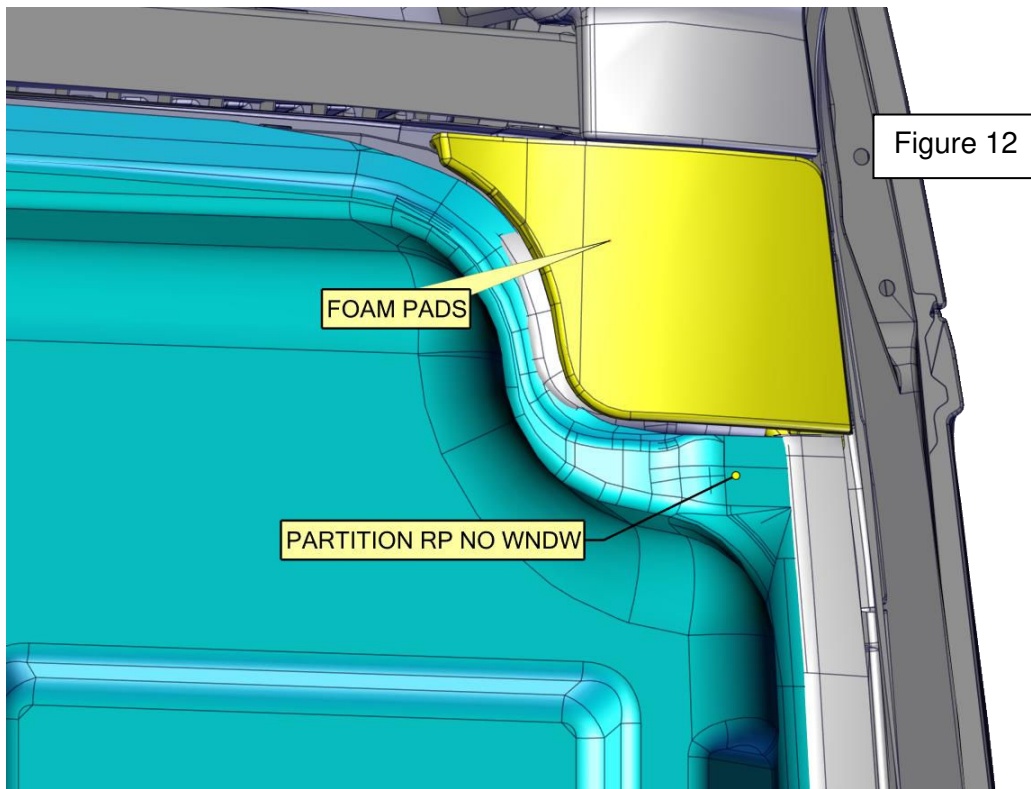
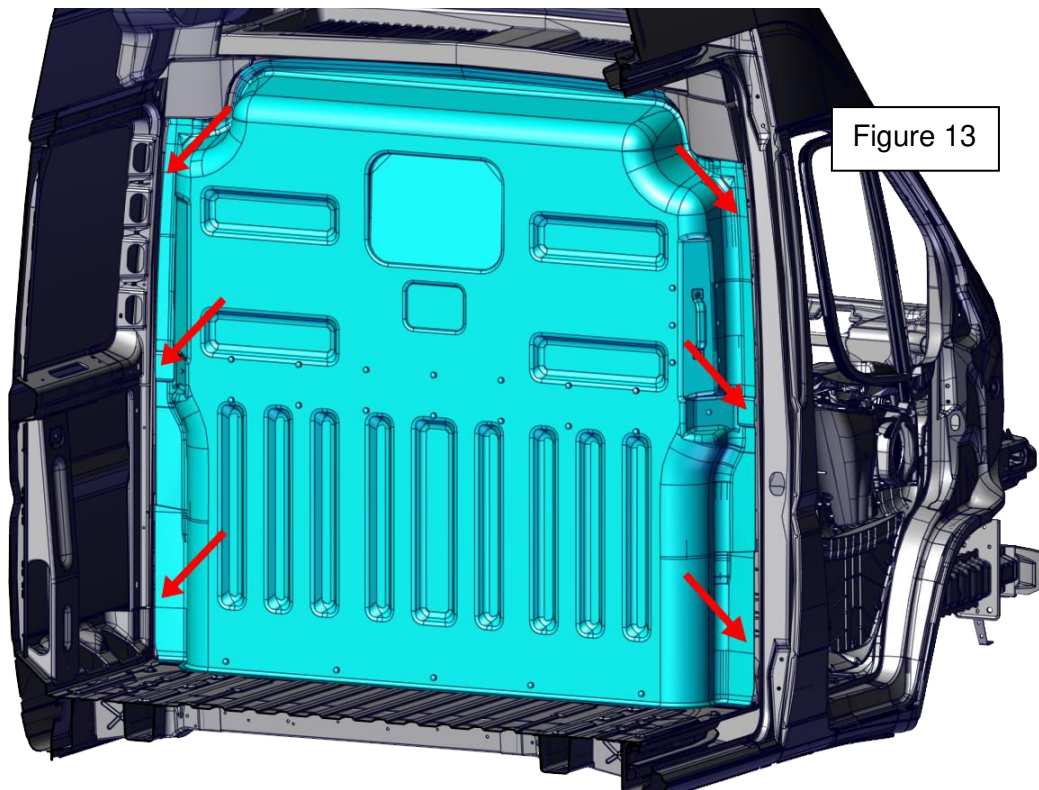


Figure 11

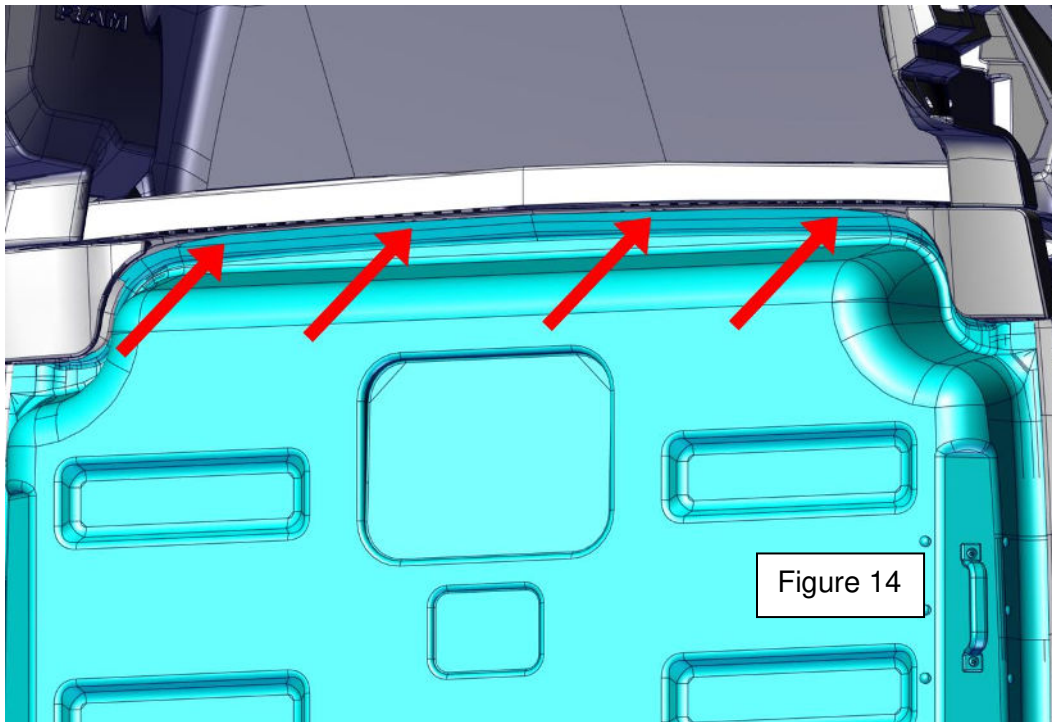
3. The corner edge of the partition must fit around the two factory installed foam pads.



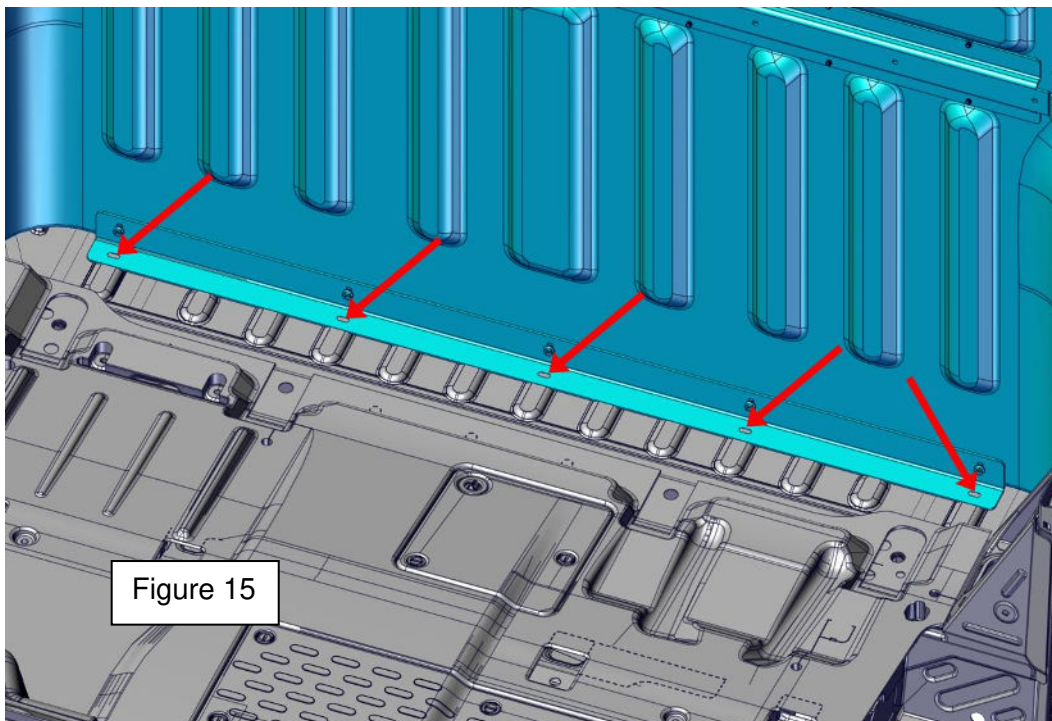
4. Use the partition and brace as a template to mark the hole locations along the right and left B-pillars.



5. Use the partition as a template to drill four 25/64" holes into the cab upper crossmember.

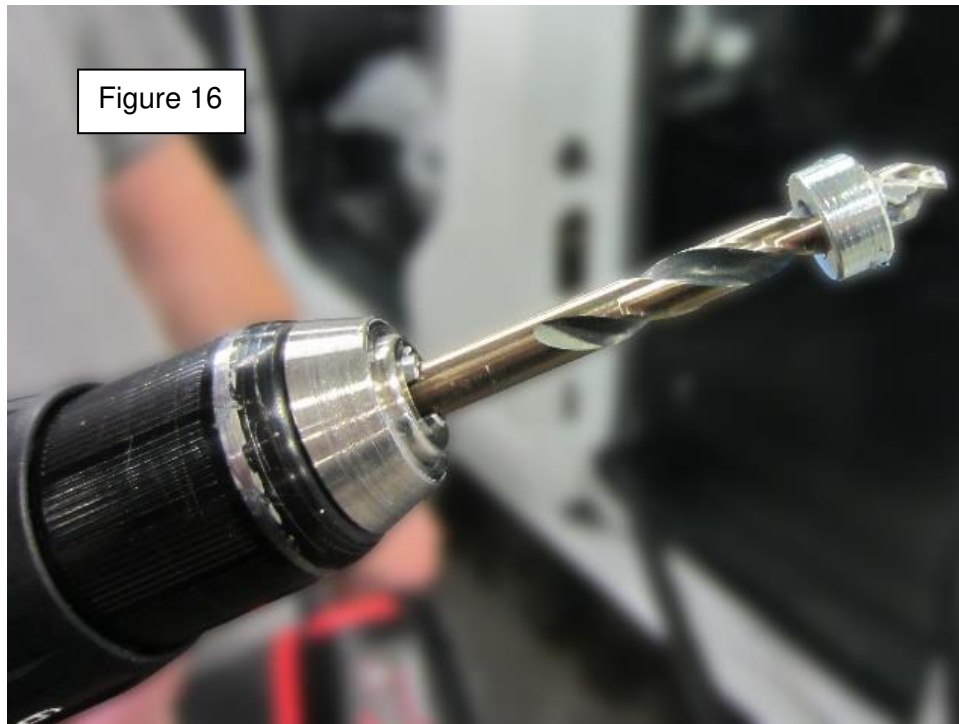


6. Make sure the partition is secure against the B-pillars. Use the L-bracket as a template to mark hole locations to be drilled.

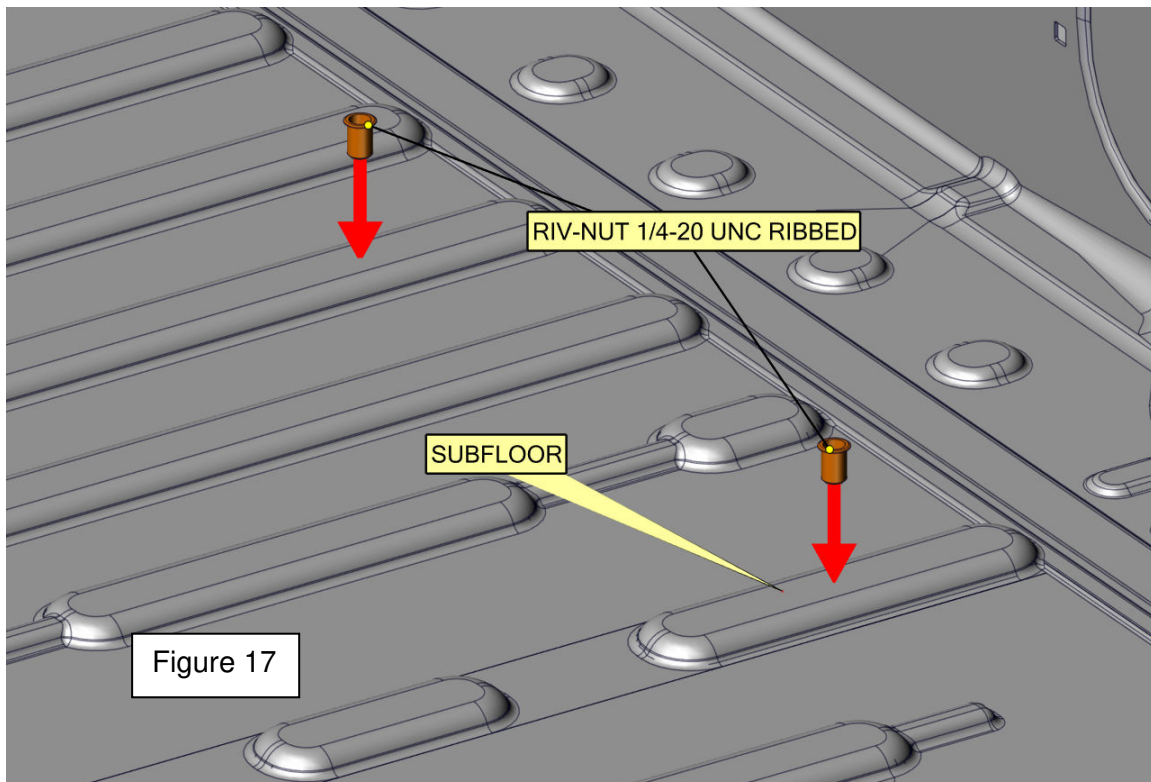


7. Slide the partition back out of the way or remove it from the van so that holes can be drilled in the floor.

8. Use a stop collar when drilling into the van floor to eliminate the risk of damage to the fuel tank or lines underneath the floor.

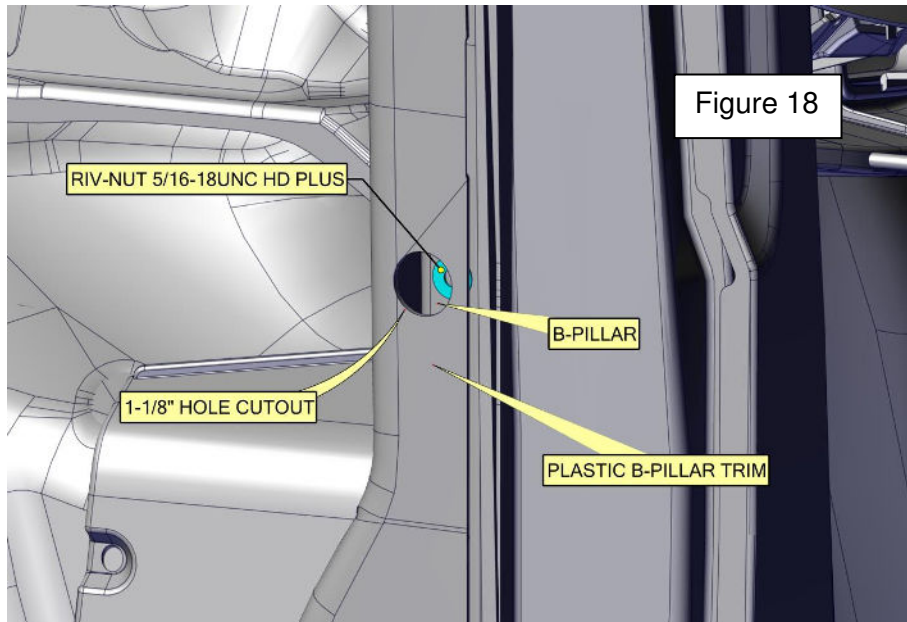


9. Drill  $25/64$ " holes in the van floor at marked locations.
10. Install five  $1/4$ "-20 ribbed Riv-nuts in each hole.

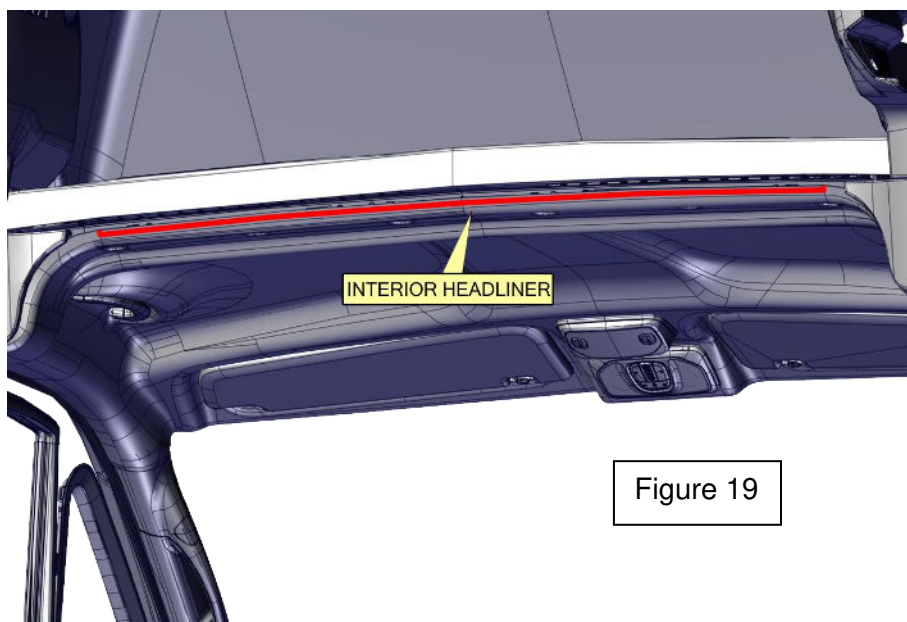


11. Use a 1-1/8" hole saw to drill through the plastic trim in the doorways in locations previously marked.
12. Drill 1/2" holes in the B-pillars in previously marked locations (three on both sides).

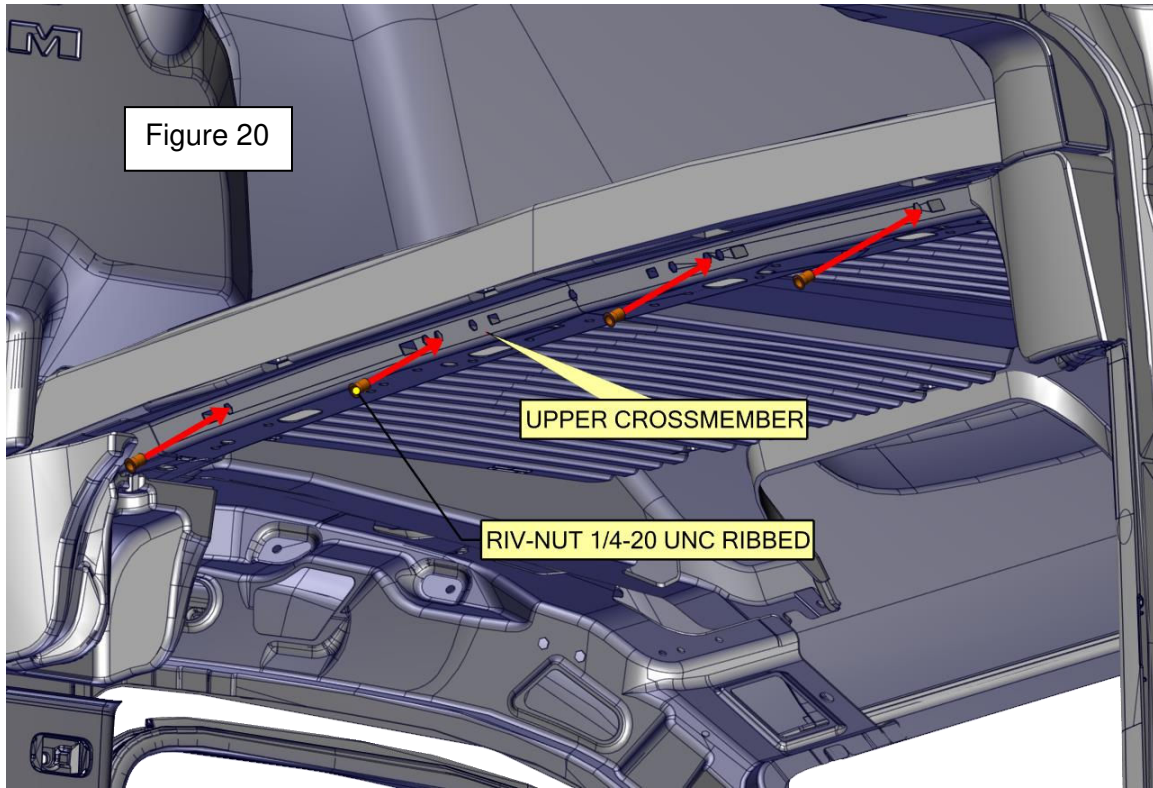
**DO NOT damage the seat belt mechanism or other components located within the B-pillar.**



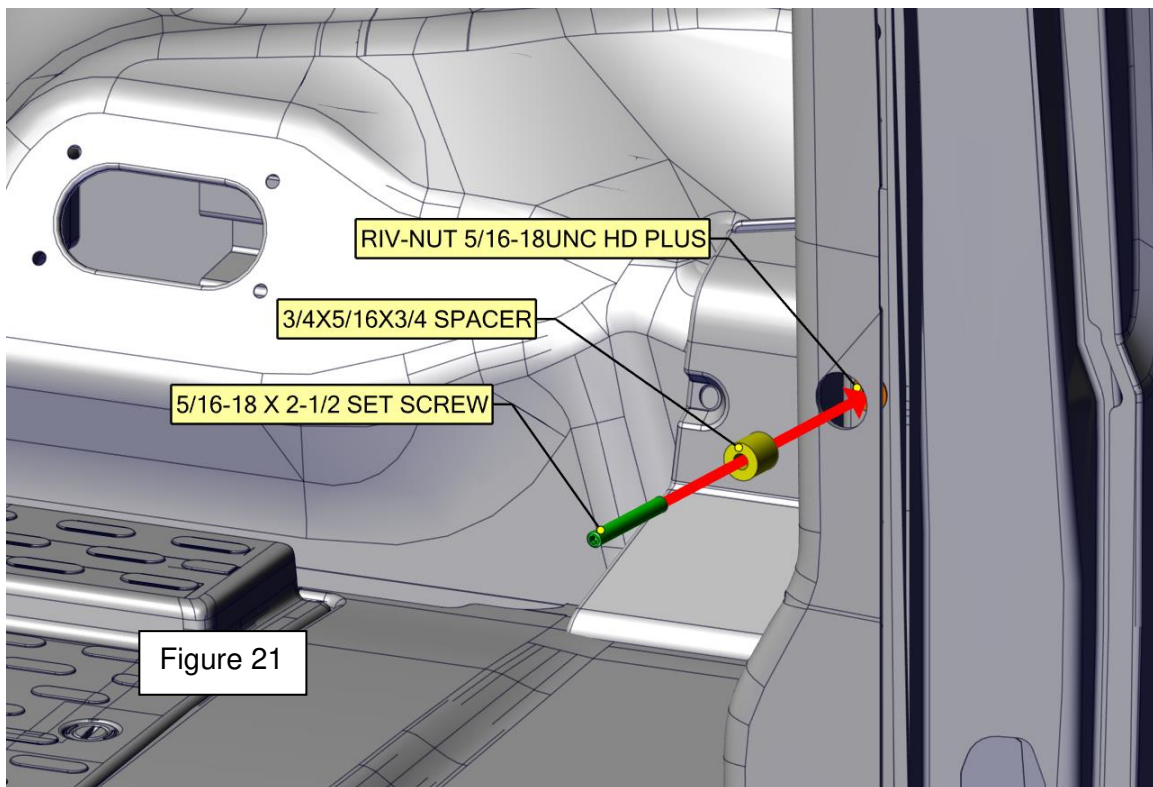
13. Install 5/16"-18 Riv-nuts in the six holes.
14. Carefully trim the cab headliner where Riv-nuts will be installed in the cab upper crossmember.



15. Install 1/4"-20 Riv-nuts in the previously drilled hole locations.

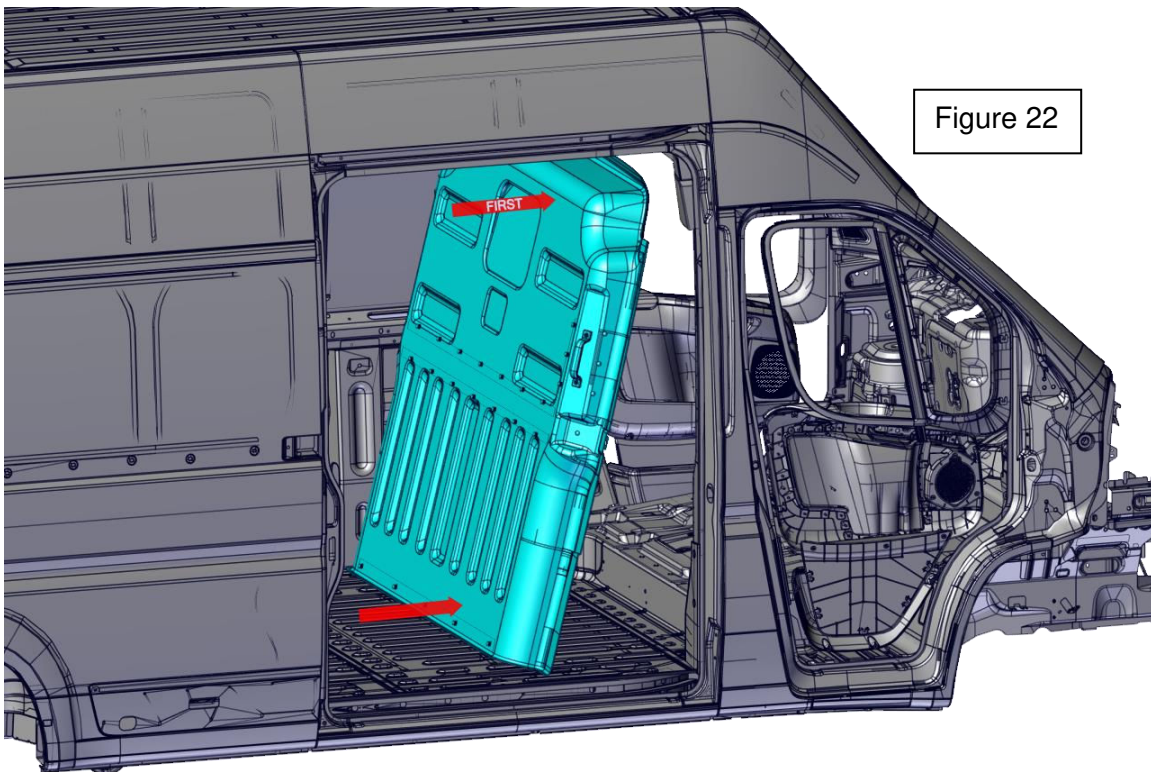


16. Install setscrews and spacers into the B-pillars (six locations).

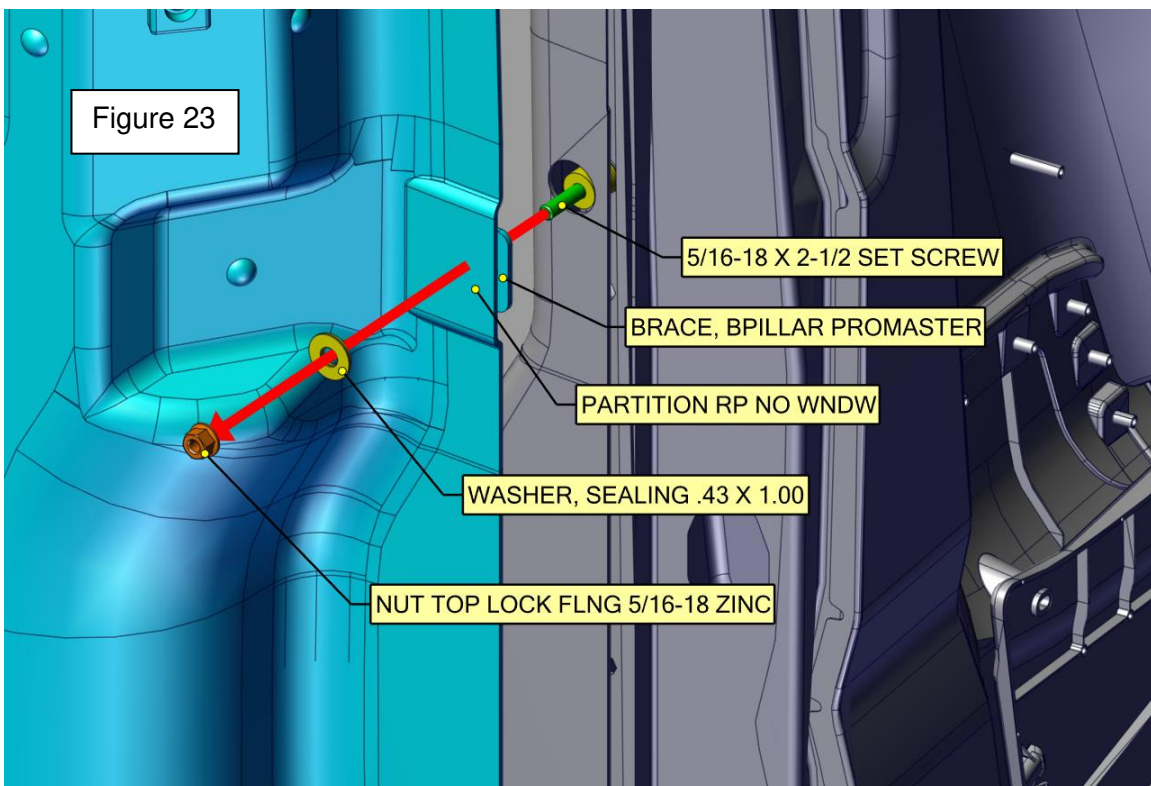




17. Re-install the partition in the van. Tilt the top of the partition forward and push the bottom in place.



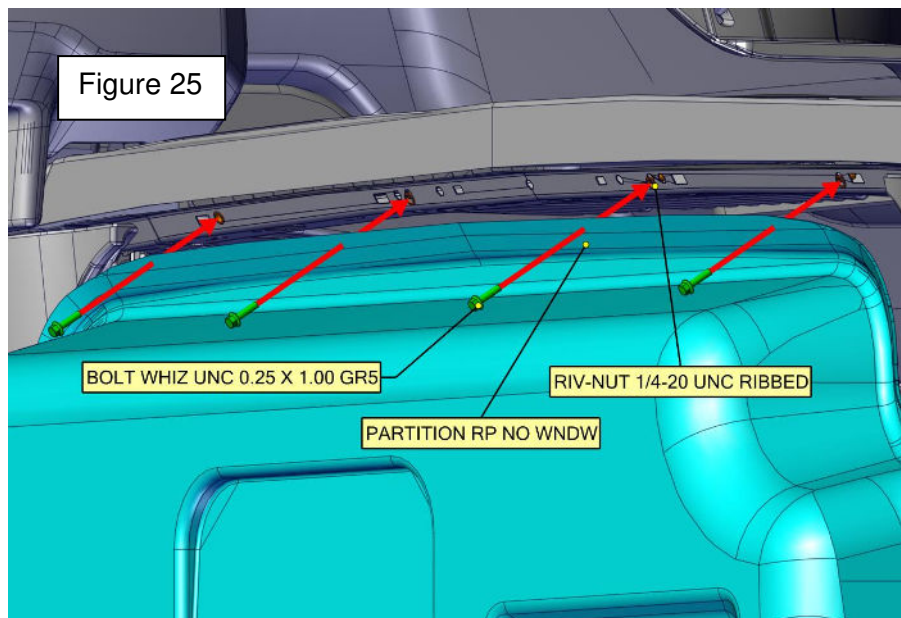
18. Make sure the partition fits over the set screws and snugly against the B-pillars.



19. Install a sealing washer and hand-tighten a flange nut on each set screw.
20. Re-install the cargo door seals. Make sure the door seals fit snugly, partially covering the flange nuts.



21. Use an Allen wrench to tighten the flange nut (a backup wrench may be required). The partition should fit snugly against the B-pillar and the top of the set screw should be flush with the outer surface of the flange nut.
22. Secure the top of the partition with four 1/4"-20 x 1" bolts. Torque to 6 ft/lbs ( $\pm 1$  ft/lbs).
23. Secure the bottom of the partition to the floor on the inside of the cab with five 1/4"-20 x 1" whiz bolts. Torque to 6 ft/lbs ( $\pm 1$  ft/lbs).





The Knapheide Product Support Center  
1848 Westphalia Strasse | P.O. Box 7140 |  
Quincy, IL 62305

P: 217-592-5233 |  
[productsupport@knapheide.com](mailto:productsupport@knapheide.com)